

Oklahoma's Phase 1 and 2 Stormwater Permits and Permittees

Green Country Stormwater Alliance
Employee Training Workshop

September 10, 2013

Tulsa Technology Center, Broken Arrow

Why Regulate Stormwater ?

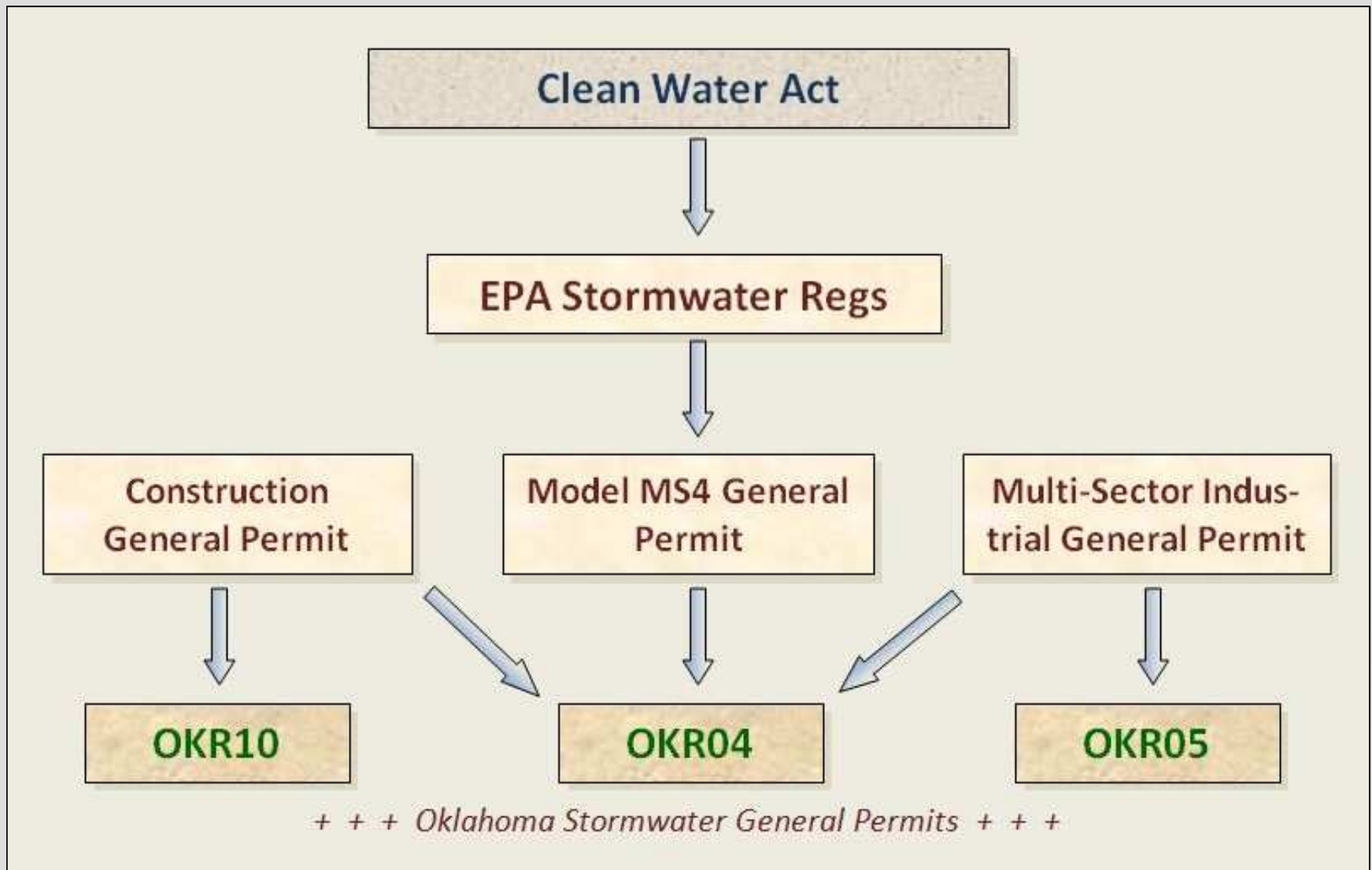
- ◆ NURP:
 - *1970's EPA "National Urban Runoff Program"*
 - *Massive nationwide sampling program.*
 - *Showed that most urban water pollution was from contaminated stormwater runoff.*
- ◆ Categories of Industries – by SIC code *.
- ◆ NPDES (national rules) vs. OPDES (Oklahoma rules)

** SIC codes are now replaced by NAICS codes.*

Overview of Phase I Stormwater Regs

- ◆ EPA Phase I rules finalized November 16, 1990.
- ◆ Covered 11 categories of “industrial activities” by SIC, plus cities $\geq 100,000$ (Tulsa & OKC). Included:
 - *Construction (≥ 5 acres disturbance, now ≥ 1).*
 - *Landfills (that received industrial wastes).*
 - *Airports (with de-icing and maintenance).*
 - *POTWs (≥ 1 MGD).*
- ◆ EPA granted ODEQ authority November 19, 1996.

Oklahoma's Three General Permits

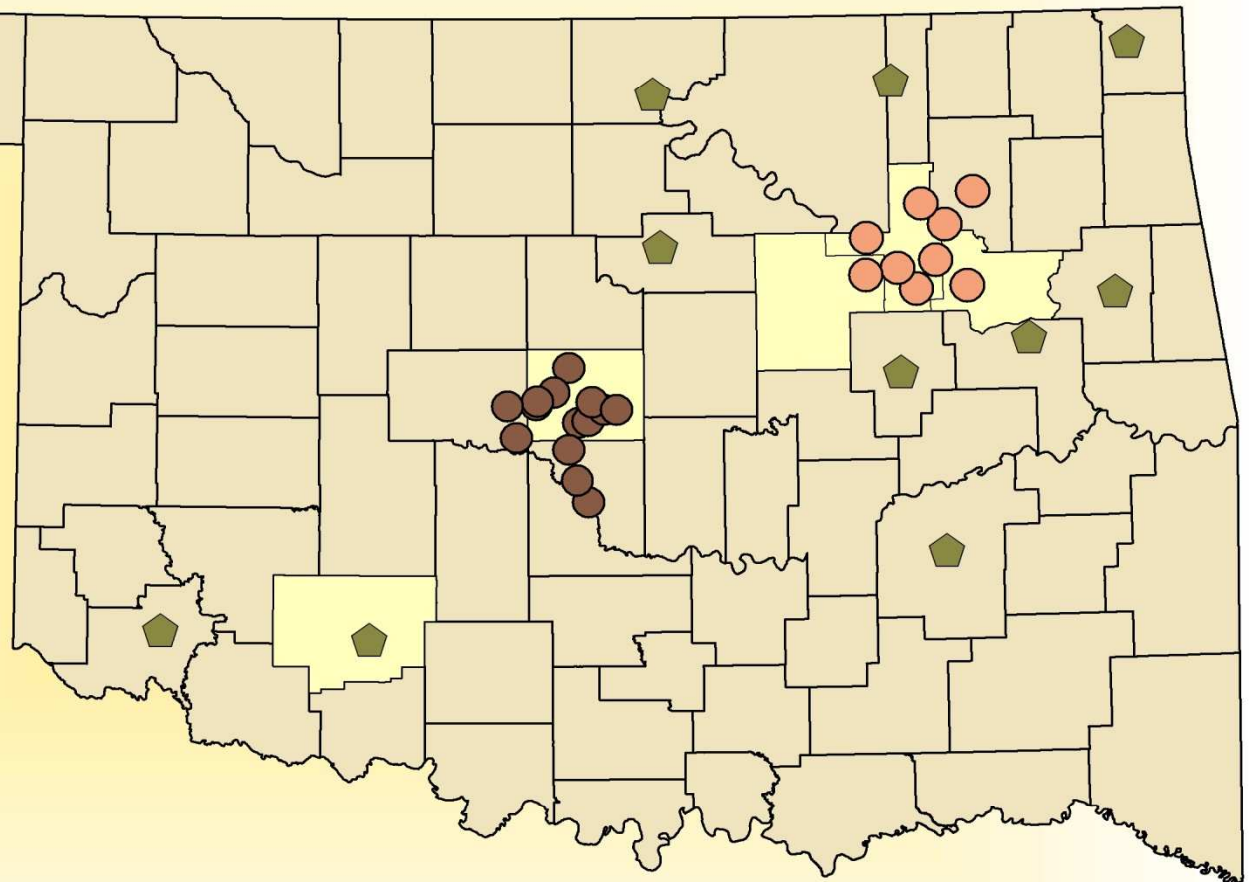


Overview of Phase I Stormwater Regs

- ◆ Became “Multi-Sector General Permit” (MSGP)
 - *OKR05 for “Industrial Activities”.*
 - *“Construction Activities” spun off as OKR10.*
 - *Individual Permits for Tulsa and OKC.*
- ◆ Renewed (and modified) every 5 years.
- ◆ Latest OKR05 effective date: September 5, 2011.
- ◆ OKR05 covers 29 “sectors”.

2003 Phase II Cities and Counties

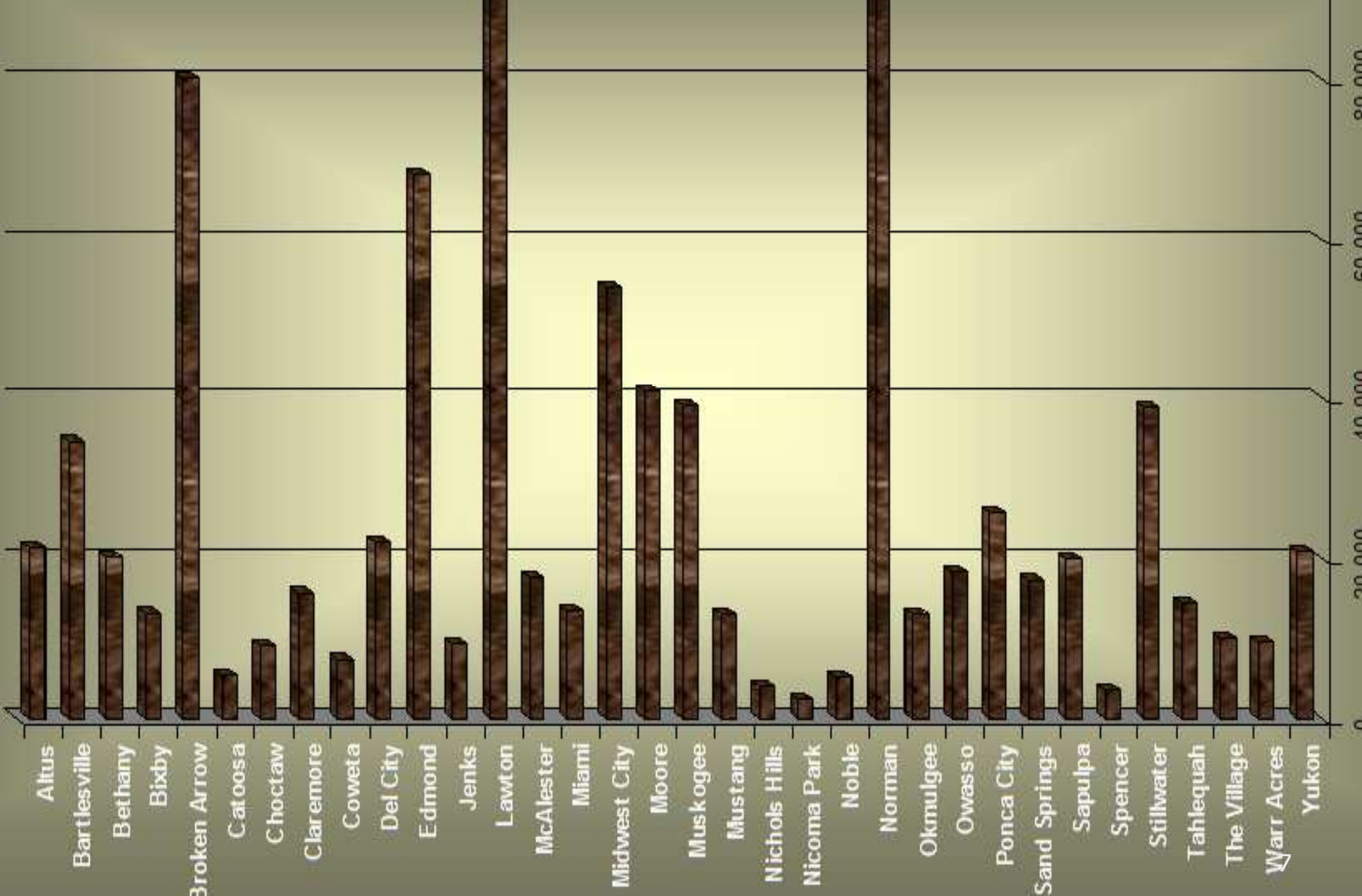
34 cities
5 counties
ODOT
OTA
OU
Tinker AFB
Fort Sill AB



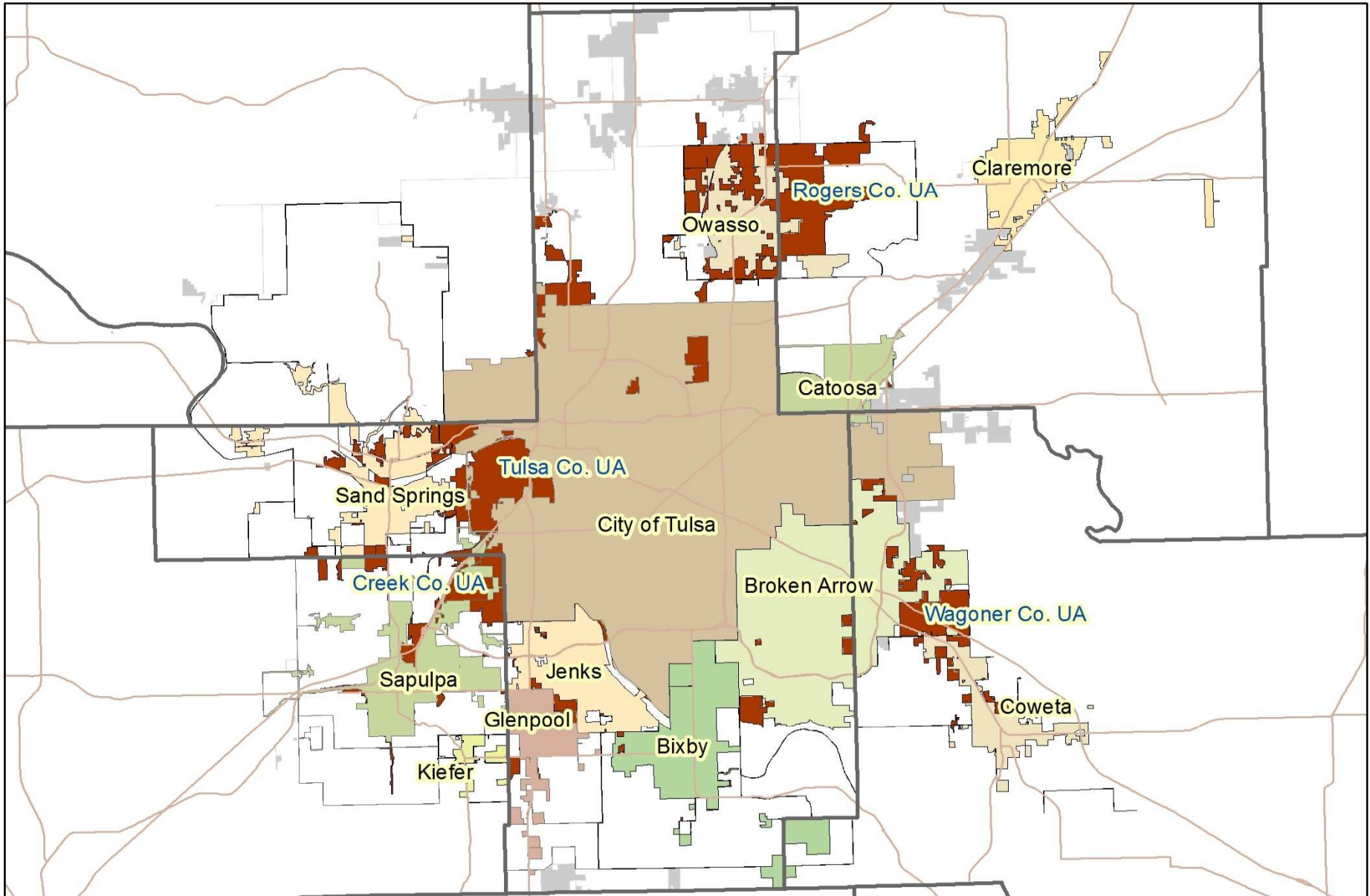
5-Year waivers were granted to several; reassess in 2013



2000 Census Population of Phase II Cities in Oklahoma



Stormwater Permitted Cities and County Urbanized Areas in Tulsa Area 2013 & 2014



Map Prepared by INCOG
June 2013

7 3.5 0 7 Miles



Green Country Stormwater Alliance Members 2013-14



Tulsa Area Members:

- Bixby
- Catoosa
- Broken Arrow
- Claremore
- Coweta
- Jenks
- Owasso
- Sand Springs
- Sapulpa
- Creek County
- Tulsa County
- Wagoner County

Potential New Permittees:

- Kiefer
- Glenpool
- Rogers County
- Collinsville

Map prepared by INCOG
May 2013

0 5 10 20 30 40
Miles



INCOG Basic Stormwater Assistance

Goal – combine resources to address those Phase II activities that are suited to a regional approach.

- *Provide Public Education and Participation Materials and Activities*
- *Assist with Mapping and Data Management*
- *Assist with Developing MS4 Inspection Programs*
- *Assist with Data Sharing and Coordination*
- *Assist with Annual Reports and SWMP Amendments*
- *Provide Employee Training Programs*

Provide a **Forum** for continuing Phase II education and information sharing.

INCOG Increased Assistance

With OKR04 being finalized by the end of this Fiscal Year, INCOG will perform additional services to GCSA on OKR04 finalization and renewing coverage.

1. Review drafts of OKR04 and work with ODEQ on final version.
2. Email and host GCSA meetings on OKR04, comment on draft.
3. Prepare GCSA Fact Sheets and updates on changes to OKR04.
4. Host GCSA employee training on the new OKR04.
5. Speak at conferences and workshops on the new OKR04.
6. List new requirements for GCSA NOI applications.

INCOG Increased Assistance (cont.)

7. Help GCSA members with their applications and attachments.
8. Help GCSA with preparing their final Annual Reports.
9. Review the new OKR04 for future Annual Report requirements.
10. Prepare a draft template of an Annual Report for GCSA.
11. Review the new OKR04 for updating SWMP documents.
12. Prepare a draft template of an SWMP document for GCSA.
13. Assist GCSA members with preparing their SWMP document.

Future Stormwater Rules and Permits

1. EPA Rulemaking: draft in 2013? / final in 2014?

- a) Will address NRC criticisms and EPA's new strategy.
- b) Will focus on LID and flow attenuation.

2. General Permits:

✓ a) OKR05 (industrial activities) finalized 9/5/11.

✓ b) OKR10 (construction activities) finalized 9/13/12.

 c) OKR04 (Phase II MS4s) finalized in early 2014?

EPA's Concerns

From construction sites
(private and municipal)



Sediment

Fertilizers

Chemicals (e.g. solvents, paint)

Herbicides / Pesticides

Oil / gasoline

Trash and debris (“floatables”)

Pollution Prevention and Good Housekeeping

*“...for
Municipal
operations...”*



City O&M

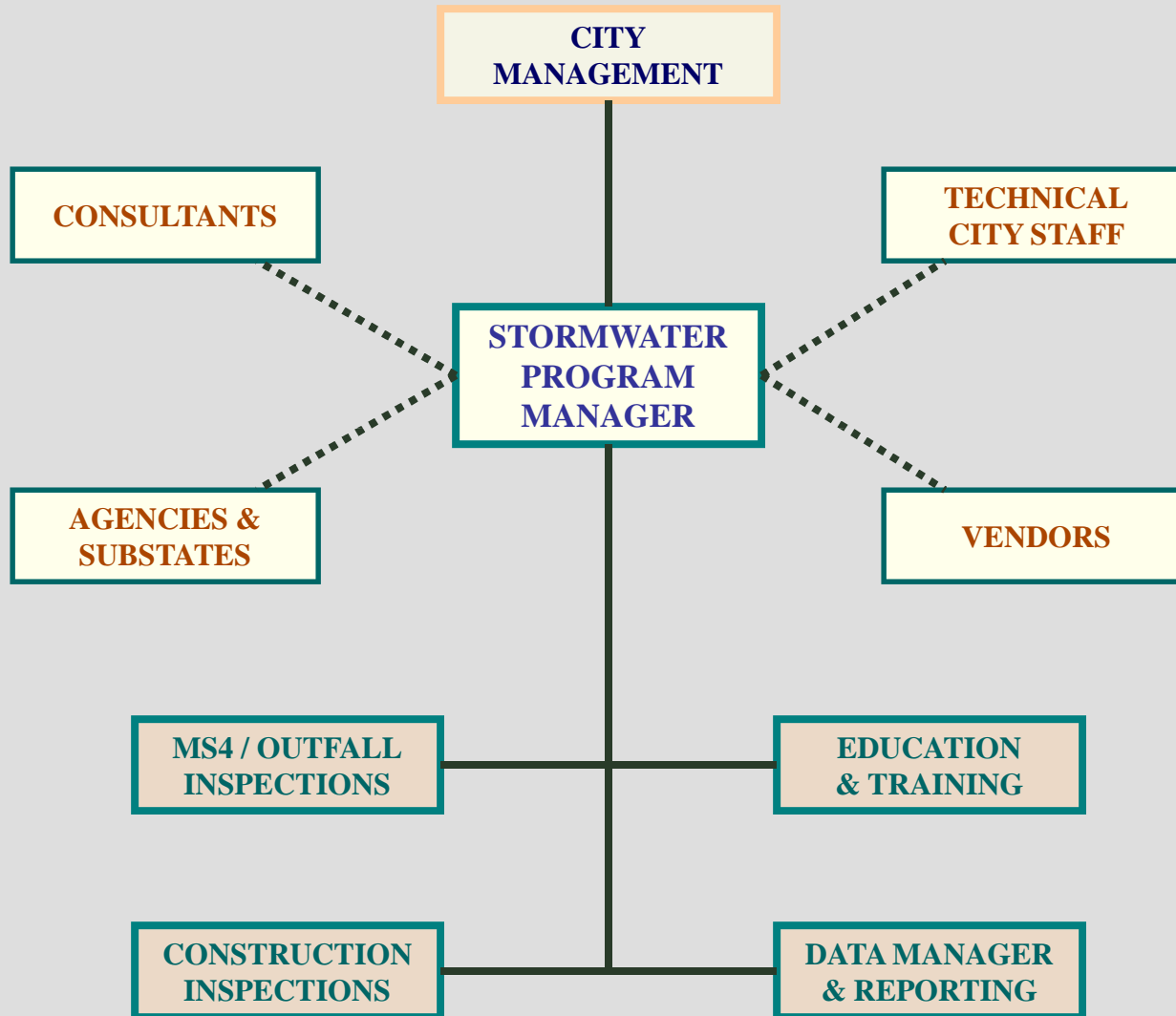


*MS4
Maintenance*

*Employee
training*



Program Management Structure

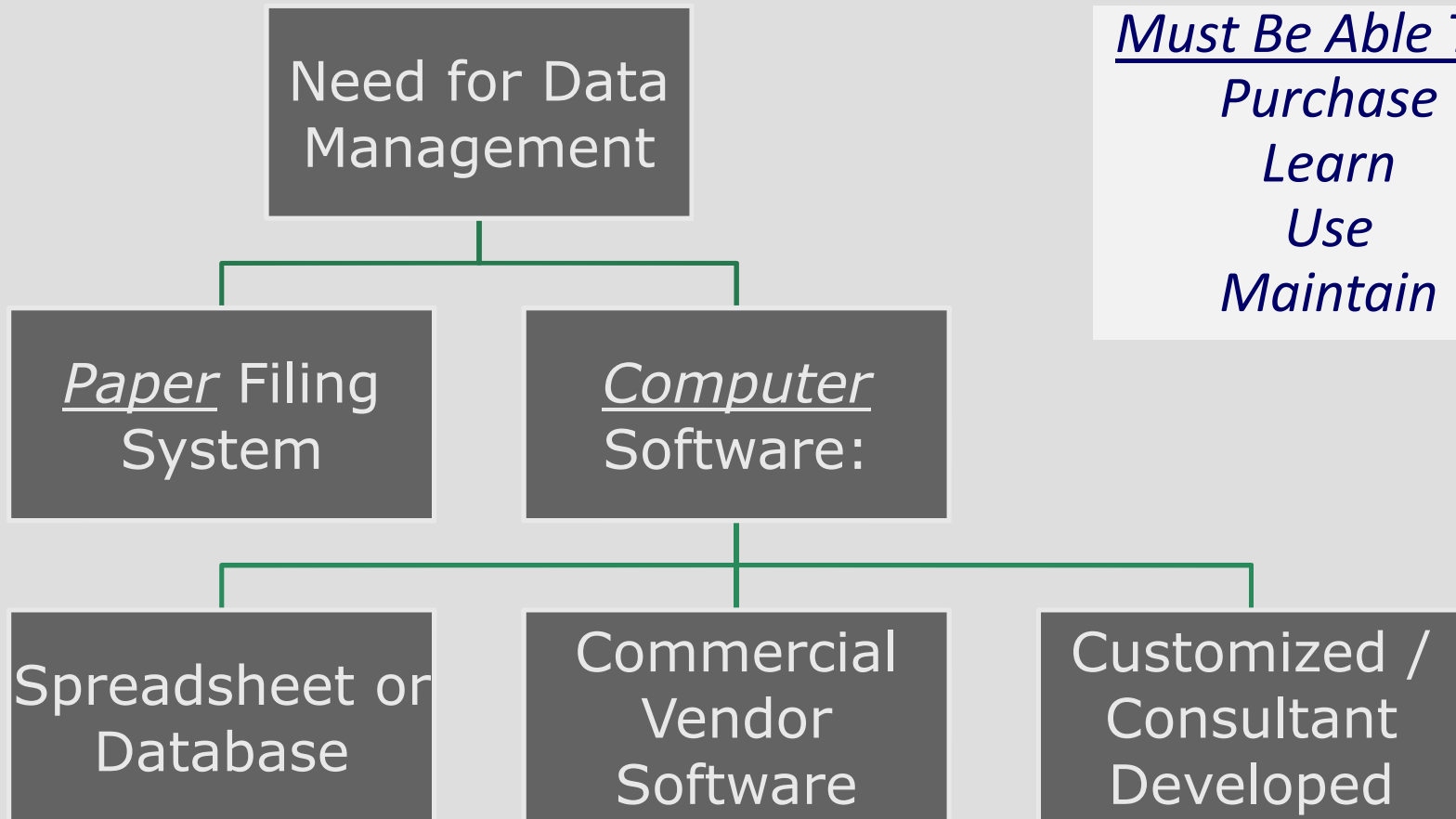


Most Phase IIs Need Help With...

- Map data. GIS, GPS, AutoCAD, paper.
- QA methods What's required, most efficient.
- Electronic data sets. Tier II, RCRA, TRI, etc.
- Field test kits. D.O. pH, Cond., etc.
- Other field gear Samplers, bottles, etc.
- Data Management:
 - Software for supervision, records, reports
 - Forms for inspections, contact records. etc.
 - Data and monitoring Quality Assurance (QA)
 - Sampling and Lab services



Data Management Options



Six “Minimum Control Measures”

1. Public Education and Outreach
2. Public Participation and Involvement
3. Illicit Discharge Detection and Elimination
4. Construction Site Runoff Control
5. Post-Construction Runoff Control
6. Pollution Prevention and Good Housekeeping